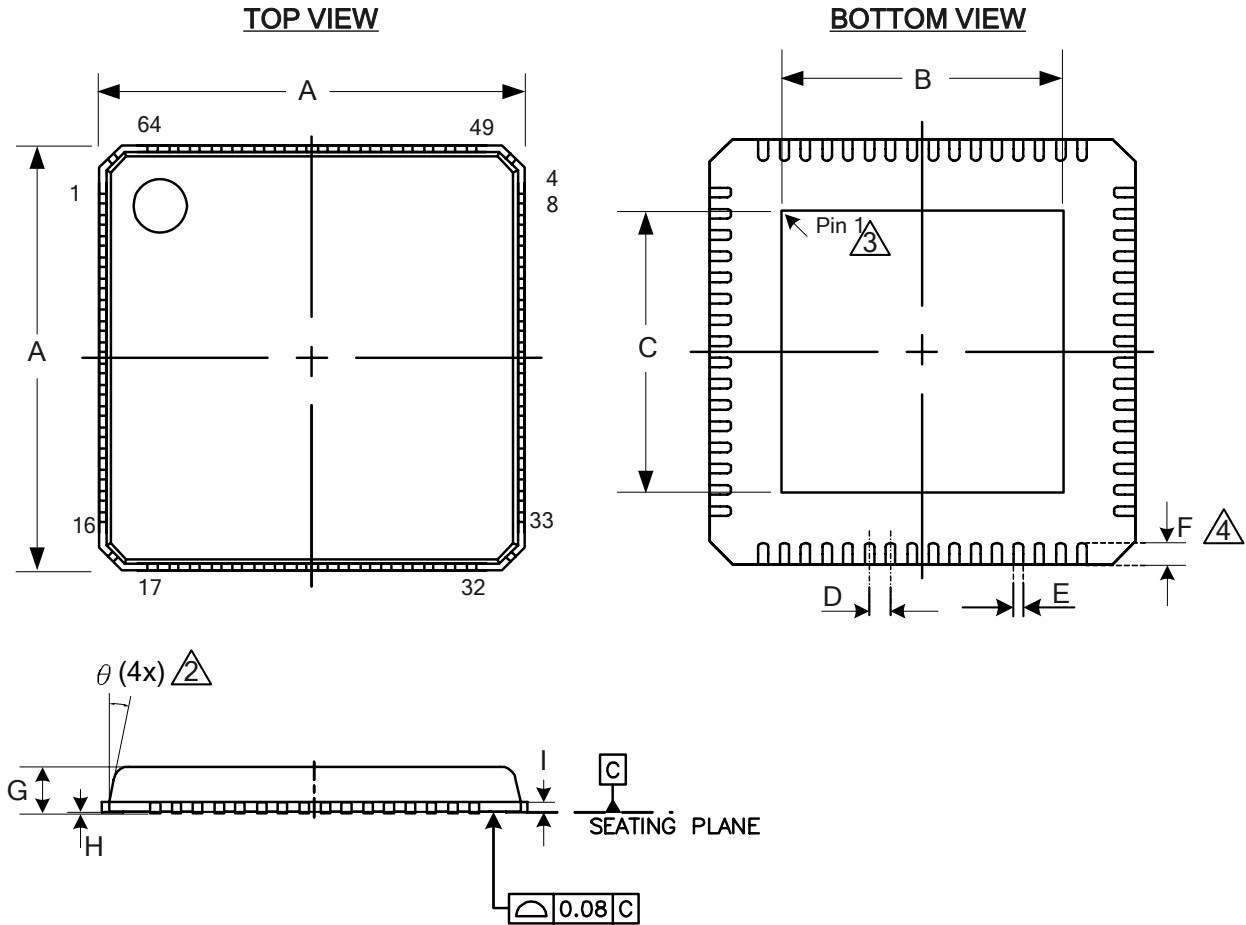


Package Dimensions



64 Pin QFN Package (9 X 9 mm)

Table of Dimensions

No. of Leads		SYMBOL								
64 (9 X 9 mm)		A	B	C	D	E	F	G	H	I
Milli- meters	MIN	9	3.45	3.45	0.5	0.18	0.35	0.7	0	0.2
	MAX		7.40	7.40		0.30	0.45	1	0.05	

Notes:

1. Conforms to JEDEC standard JESD-30 MO-220.

△2 Side of body may be square or curved.

△3 Exposed pad may have chamfer in area of Pin 1.

△4 Pins may protrude from edge of body by 0.05 mm.